

Theory Assessment - SAMPLE

Music Audition

Example Answer.

This assessment is to determine the level of your music literacy and theoretical knowledge. If you cannot answer some questions, it will not necessarily preclude you from being accepted or passing the process. This assessment aims to identify your strengths and weaknesses in order to best prepare you for entry.

1. Name these notes. NB: clef changes

Treble Bass Alto

A E D[#] B^b D G A^x A[#] F A^b E[#] F

(Dsharp) (Bflat) (D Natural) (A double sharp)

Middle

2. Name a time signature that would match the following:

- a. Compound duple time: $\frac{6}{8}$
- b. Simple quadruple time: $\frac{4}{4}$

3. Write a D major scale in the treble clef, ascending, using minims (half notes).

(Accidentals or key signature)

a. Add the scale degrees (numbers)

b. What is the relative minor scale of D Major? B minor (shares same key signature)

a) 1 2 3 4 5 6 7 8 |

4. Write a E harmonic minor scale descending in the bass clef, using crotchets (quarter notes).

a. Add a square \square around any intervals that are a semitone apart (half a tone).

b. Circle \circ the supertonic (scale degree). supertonic is scale degree no. 2

Semitone Semitone Semitone

5. Write the primary triads of F major in root position, treble clef.

a. Then re-write them in first inversion. Hint: (I⁶ or F/A)

b. Then re-write them in second inversion.

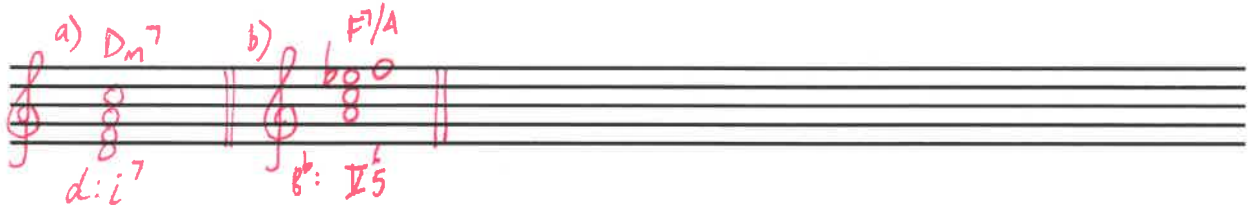
F B^b C a) F/A B^b/D C/E b) F/C B^b/F C/G

I IV V I⁶ IV⁶ V⁶ I⁶₄ IV⁶₄ V⁶₄

6. Write the following seventh chords in the treble clef.

a. D minor 7 (d: i7)

b. F7/A (\flat_5 V 6_5)



7. Write the following chord progression, smooth voiced, in four-part vocal style (SATB).

D G Bm Em A7 D (D: I IV vi ii V⁷ I)

a. What type of cadence is featured in this progression

Note: If you can only do parts of this assessment and thus are identified to need further revision of theory skills, resources and support materials will be provided to enable you to be at the required level prior to starting your degree.

Feel free to contact us if you have any queries.

Contact:

Phone: 08 8373 8777

Tabor Main Campus Email: enquiry@adelaide.tabor.edu.au

Music Department Email: music@tabor.edu.au

Music Coordinator, Dr Janelle Fletcher: jfletcher@adelaide.tabor.edu.au

Facebook: Tabor Music Department

Instagram: tabor_music