

THE **STEPS** TO CREATING A **14736251** composition

STYLE

Work out what style you want to compose in
Jazz, Classical, Bossa Nova, Latin, etc,

Work out what instruments you want

What works well is a melody instrument and accompaniment,

YOUR KEY

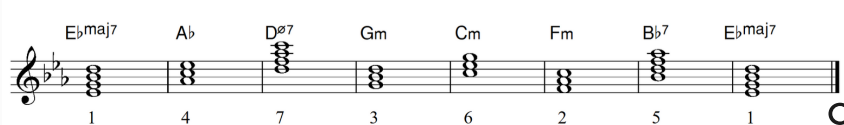
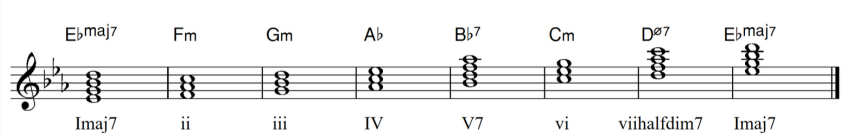
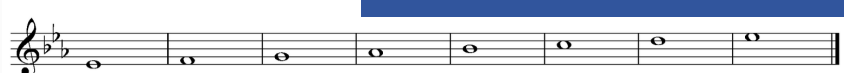
Decide on a key.

Write out the scale.

Build the triads/7ths.

Then re-arrange with the correct order of 1 4 7 3 6 2 5 1..

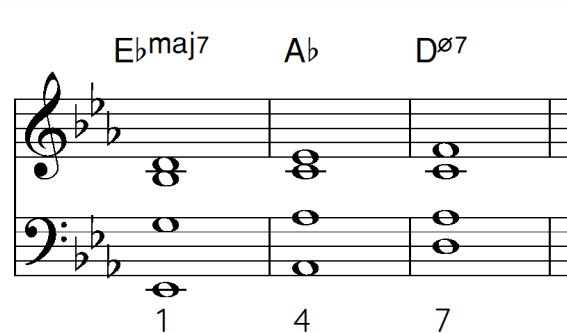
Consider where to add 7ths or 9ths..



INSERT CHORDS

Decide on an accompaniment instrument such as piano or guitar.

Start by inserting chords as semibreves.



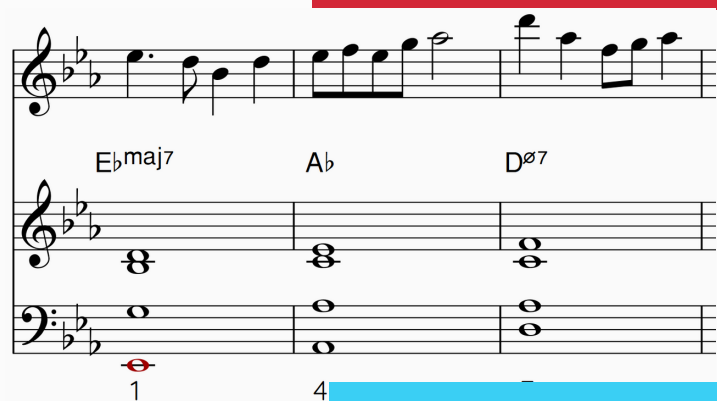
Change some chords to be 'extended chords' such as 7ths or 9ths or sus chords. Or change some chords from major to minor, diminished etc.

Also SMOOTH VOICE the chords so they move to the closest note as possible (other than the bass)

MELODY

Add a melody that fits with the chords.

Write a melody with passing notes. Make sure it is "singable" and compliments the style.



RHYTHM

Add rhythm to your chords to make it consistent with your style

If you want to add other instruments, consider adding a bass instrument and percussion line. Ensure they compliment the style, fit the chords, but rhythmically different from the melody and accompaniment.



DYNAMICS

Add dynamics, tempo markings and articulation.

Revise your composition. Think about phrasing, structure, a point of climax and clear conclusion

EXTENSION: add tritone or chord substitution

