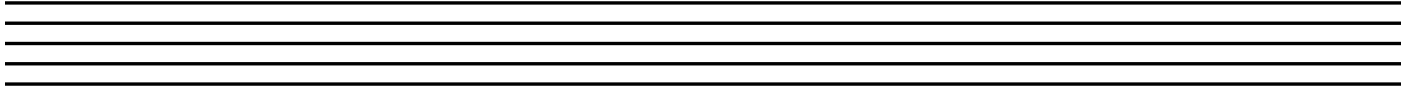


5. Write the primary triads of D major in root position, treble clef.

- a. Then re-write them in first inversion.
- b. Re-write them in second inversion.



6. Write the following chords in the treble clef.

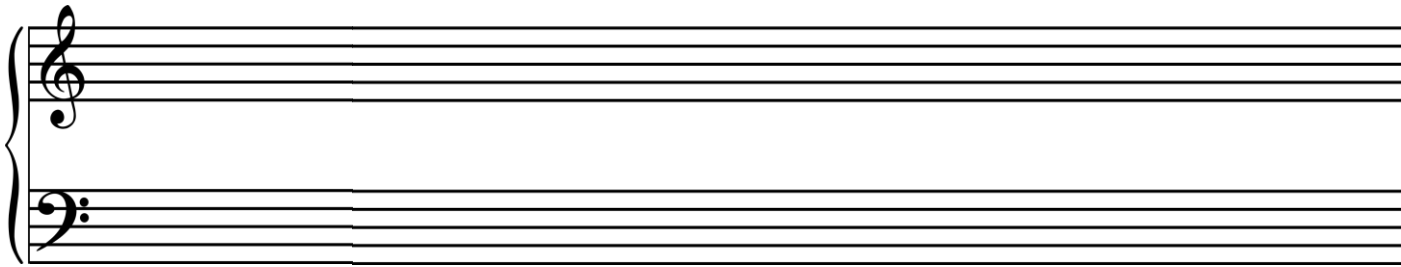
- a. E minor 7 (e: i7)
- b. Bb7/D (Eb: V⁶₅)



7. Write the following chord progression, smooth voiced, in four-part vocal style.

G C Em Am D7 G (G: I IV vi ii V⁷ I)

- a. What type of cadence is featured in this progression



Please see the next link for an example answer sheet.

Feel free to get in touch if you have any questions.